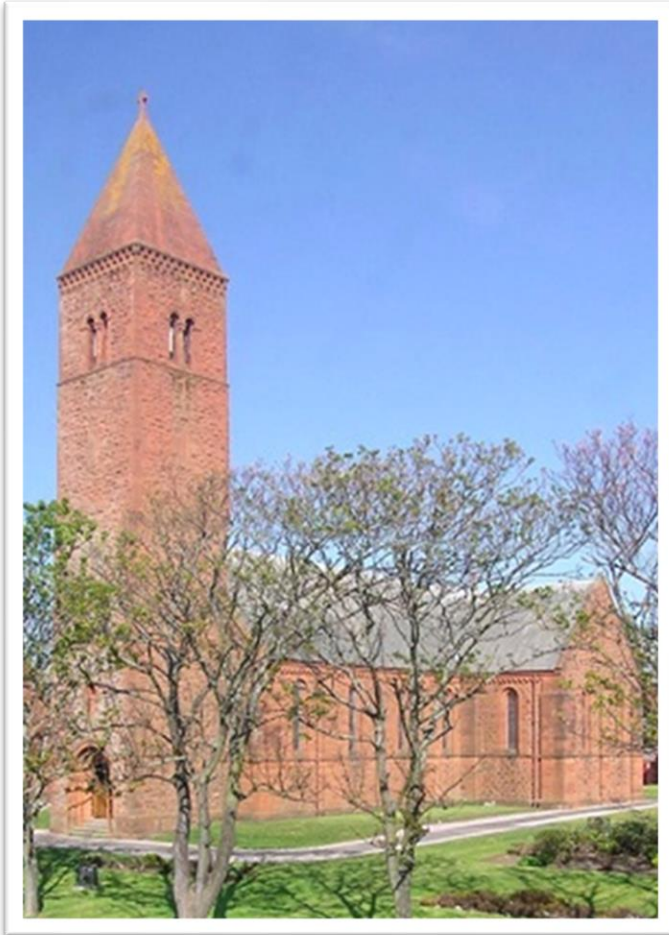


Church of Scotland

Parish Profiles

of

St Nicholas Parish Church and Kingcase Parish Church Prestwick
(in Deferred Union)



ST NICHOLAS PARISH CHURCH

209 Main Street

Prestwick

KA9 1LH

<http://www.stnicholasprestwick.org.uk/>

“Trust in the Lord with all your heart,
never rely on what you think you know.
Remember the Lord in everything you
do, and he will show you the right way”

Proverbs 3:5-6:

KINGCASE PARISH CHURCH

11 Waterloo Road

Prestwick

KA9 2AA

<https://www.kingcase.co.uk/>



Table of Contents

ST. NICHOLAS PARISH CHURCH PROFILE	4
Introduction	4
The Church	5
The Manse	5
The Parish	7
Services	8
Governance.....	9
Committees	9
Administration and Communication:.....	9
Fabric:.....	9
Finance:	9
Pastoral:	9
Education:.....	9
Mission:	9
Health and Safety:	10
Giving	10
The Community	11
Strengths / Weaknesses / Challenges	12
Strengths	12
Weaknesses	12
Challenges.....	12
The Future	13
APPENDICES	14
Appendix 1 - Malawi Church Profile Information 2023.....	14
Appendix 2 - Drawings of the Church elevations.	16
KINGCASE PARISH CHURCH PROFILE	18
Introduction	18
History of the charge and/or congregations	18
Kirk Session Statement	18
Roots and History	18
Mission Plan	19
Mission Context	19
Strengths/needs/challenges	19
Spiritual life of the congregation	19
Outreach.....	19
Communion Roll	20
Weekly attendance at worship	20
Age profile of congregation	20
Past five years new members	20
Local Church Review.....	20
Presbytery Plan beyond this current ministry	20
Operating basis.....	20

Community Profile 22
 Parish Area 22
Worship Life 22
All Age Worship 24
Pastoral Care 24
Christian Education 25
Ecumenical Context 26
World Church 26
Stewardship and Finance 27
Church, Manse and Halls 28
Web Links 28
 Appendix 3 - OSCR | Charity Details - Kingcase Congregational Accounts 28
Appendices can be accessed as separate attachments on request. 28

ST. NICHOLAS PARISH CHURCH PROFILE

Introduction

Prestwick is a small sea-side town in South Ayrshire with a population of just under 15,000. It is twinned with Lichtenfels (Bavaria), Vandalia (Ohio) and Ariccia (Italy) The town is mainly residential, with little “heavy” industry but there are excellent road and rail links to the Central Belt including Glasgow, where many people commute for employment. To the north side of the town there is Glasgow Prestwick Airport offering flights to the continent. In the town centre there is a buoyant social scene with many restaurants and coffee shops appealing to all tastes. Most of the town’s independent retail outlets and Post Office are to be found along its Main Street, but there is also a large Retail Park on the edge of its eastern boundary, about a mile and a half from there. The nearest banks are in Ayr, the adjoining town, three miles to the south. Leisure activities include bowling, golf and sailing. On the Main Street there is the 65-Club with hospitality and a range of activities for retirees, whereas for a younger generation there is a new play park on the seafront, a long established one in Boydfield Gardens in the town centre and another within the parish bounds of St. Nicholas at the sports field where football and cricket are played. The four congregations of the Church of Scotland in Prestwick are now in two deferred unions. The congregations of the North and South Parish Churches are in deferred union as are the congregations of St. Nicholas and Kingcase Parish Churches.



The Church

St. Nicholas Parish Church and its adjacent Manse sit in their own grounds on a very attractive corner site at the south end of the Main Street. It is on the major bus route through the town and car parking is readily available directly across the road. The church, built in 1908, is of red Mauchline sandstone to the cruciform design of the Glasgow architect McGregor Chalmers. Its tower rising to over 100 feet is a landmark for miles around. The long central aisle leads to the raised chancel, where the communion table, again raised, is set to the east as the focal point of the sanctuary. Alterations to widen the chancel were made at the time of the church's centenary in 2008, when changes were also made to the front door, to create a bright, open welcoming area. At that time, the interior lighting was modernised and since then the grounds also have been improved. The fabric of the building is generally well-maintained.



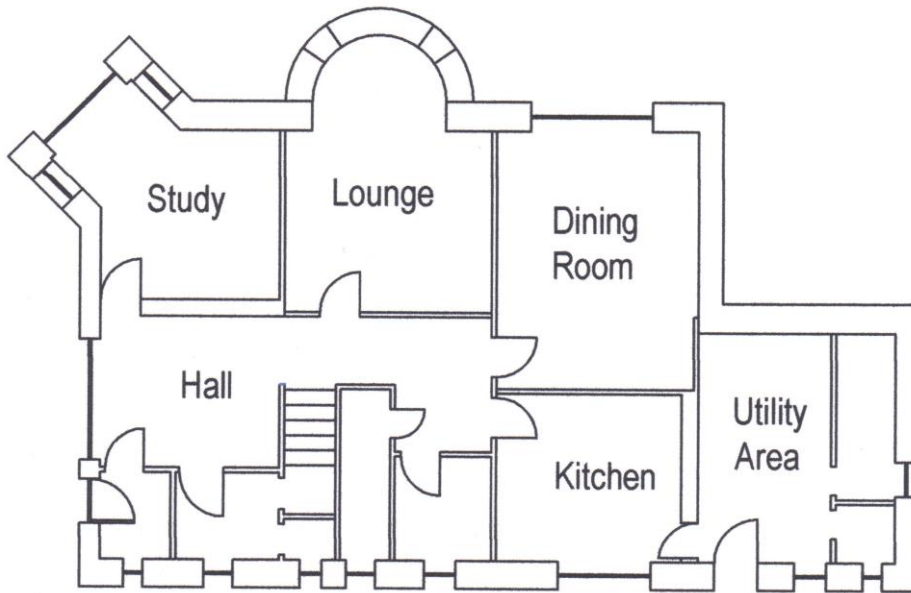
Within the chancel, there is a very fine pipe organ built by the English firm of Norman and Beard and installed in 1909. Since then, it has been overhauled on three occasions, but the original specification has been retained without alteration. Throughout its history it has been meticulously maintained and in 2019 it was recognised as an "instrument of importance to the national heritage" and issued with a Grade II* certificate to that effect. During the past few years, the church has been host to recitals given by organists of national repute who have requested the opportunity to perform here as part of a concert series. It is routinely played at services of worship every Sunday and on other occasions as required. In the chancel there is also a Casio "Privia" digital piano used when in keeping with the style of music being sung.

The sound system within the church allows services to be relayed to one of the halls and to the creche room, and to be recorded to be broadcast later the same day, on YouTube which regularly sees 130-180 hits each week. <http://www.stnicholasprestwick.org.uk/>

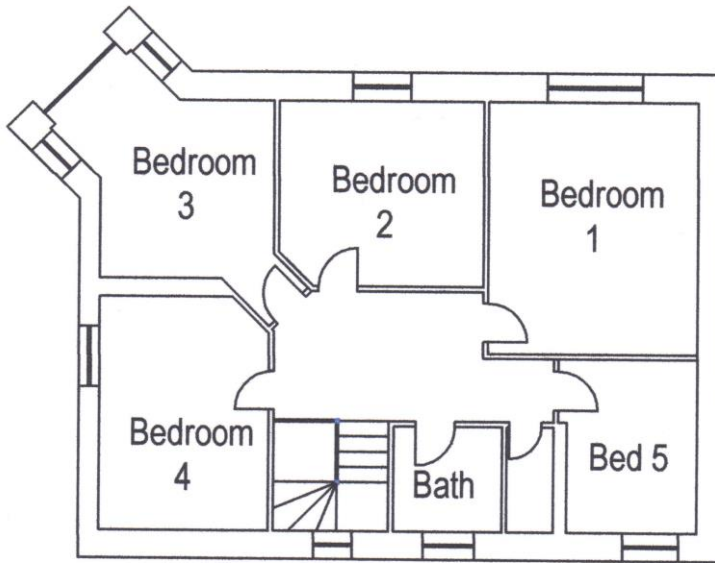
The Manse



The manse, an ideal family home, is an attractive two-storey building of the same sandstone as the church. On the ground floor there are an attractive entrance hall, three public rooms, the kitchen and utility room and a w.c. There are five bedrooms upstairs. Attention has been paid annually, as stipulated, to maintenance and decoration. Throughout the building there is gas central heating. To the rear are a garage and a private garden accessible by driveway. Since July 2022, it has provided a home for a family of seven Ukrainian refugees, who have ensured that it has remained in good order, with any necessary repairs being addressed promptly. Throughout the building there is a broadband wi-fi system.



Ground Floor Plan

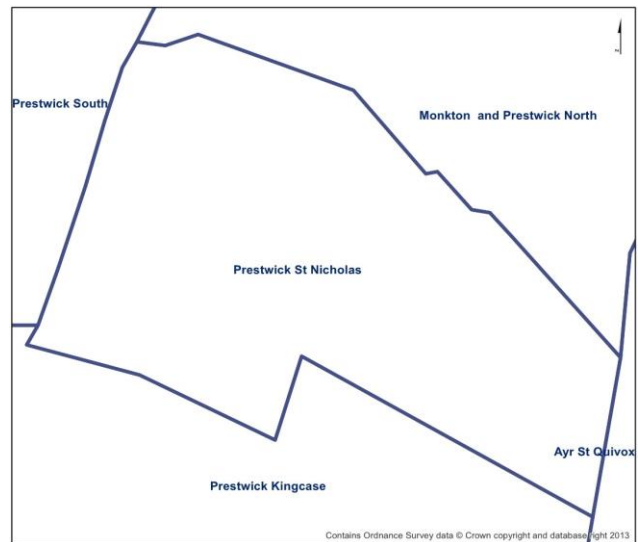


First Floor Plan

The Parish

The parish extends eastwards from Main Street, encapsulating a mainly residential area where most of the 1585 homes are owner-occupied. Prior to the pandemic and to the current vacancy, strong links were maintained with one third being visited annually and Christmas and Easter Cards being delivered to every home with greetings from the church. On the eastern flank of the parish land belonging to St. Cuthbert's Golf Club an area has been set aside for the development of further housing or care home, though plans have yet to be finalised. Together with the golf club, within the parish boundary, there is the public park where a number of sporting amenities and a children's play park (previously mentioned) may be found. There is also a privately run children's nursery, who make use of our halls

once a week and the Biggart Hospital for the care and rehabilitation of the elderly, where certain clinics are held. The Minister serves on a rota basis as chaplain to one of Prestwick's four primary schools (one being Roman Catholic) and to the local academy. Both the children's nursery and the primary school nearest to the church use our premises for their end of term services. All the schools have an excellent reputation. There is an independent co-ed school in Ayr, three miles away.



Services

The Communion Roll in December 2023 stood at 420 members with a weekly attendance at worship varying between 80 and 130 people.

Sunday morning worship is held in the sanctuary each week at 11a.m., with the Sunday "Skool" children being present for the first part of the service. These services are recorded to be broadcast on YouTube at 1 p.m. and discs or DVDs are delivered to housebound members who are not online. Praise is from CH4 or "Mission Praise" and is led by the choir who offer an Introit and an anthem each week. A creche, run by parents is provided for those aged under three. Holy communion is celebrated on three Sundays each year at 11a.m. and 3p.m. It is the practice for the church to be "dressed" on these occasions. Apart from the communion Sundays, "coffee after church" is provided in the Kirk Café in one of the halls, to promote fellowship and provide an opportunity for discussion. On the last Sunday of each month, the "Back o' Five Club", an informal gathering geared towards young families, meets in the Old Hall to share praise, games or a film with a Christian message. Every Sunday morning there is a carpool of volunteers who offer transport to those who would otherwise find difficulty in attending.



Each autumn a Harvest Thanksgiving service is held and every November, following our own Remembrance Service, the congregation will be represented at the town's act of remembrance at Prestwick War Memorial. These services are conducted by the local clergy on a rota basis. Christmas services usually include a service of choral praise in early December, led by the choir, who in recent years have been joined by friends from Kingcase Church. Services are also held on Christmas Eve and on Christmas morning. During Holy Week services are shared with the other churches each evening apart from Saturday, the venue being determined by rotation. In recent years on Easter Saturday St. Nicholas has joined with the other churches in an open-air event in the local town-centre park.

Governance

The Kirk Session have decided to depart from the historic and current practice of the Church of Scotland in order to permit the ordination, induction or appointment of a minister who is in a civil partnership or a same sex marriage.

In 2018, the church adopted the unitary constitution, so the Kirk Session, currently numbering 46 'active' elders are the trustees. There are 7 working committees of elders and congregation members. Each has a specific remit and reports to the Kirk Session at least twice a year.

Committees

Administration and Communication: The committee deals with all general office requirements, such as the preparation, printing and distribution of the newsletter both electronically and by hard copy, the printing of all necessary orders of service and publicity through the church website and the local "Going Out" Magazine. Hall lets are invoiced and data protection is monitored to ensure that GDPR consent forms are kept up to date.

Fabric: Maintenance of buildings and property; property register and inventory; day-to-day repairs. This committee is responsible for maintaining the church buildings and the Manse. The majority of the works are carried out by contractors, including joiners, plumbers, slaters, electricians, masons and gardeners. The committee engages these contractors following expenditure approval from the Kirk Session. Some substantial masonry repairs have been carried out in accordance with the latest Quinquennial Report. In addition, we have replaced the church heating boilers after 22 years of sterling service.

Finance: In accordance with the regulations established by OSCR, the finance committee is responsible for the stewardship of our monetary resources, attending to the financial needs of the church. Annually a statement of accounts and budget is prepared. In addition to the routine tasks of dealing with the regular giving, including gift aid, insurance, employees' remuneration and charitable appeals. Sound stewardship has ensured that we are able to meet in full our commitment to the national church.

Pastoral: In liaison with the Minister, the pastoral committee is a coming together of the various coordinators of pastoral outreach to members of our church family and those of our local community who hold meetings in our premises. The list covers roll-keeping, elders' districts, pastoral care by the visitation group to the housebound and residents in care homes. The carpool provides transport to and from church and, if needed, to local hospitals. There is the weekly ministry of church flowers, the delivery of DVDs to the housebound and in the autumn, the distribution of harvest gifts. Church organisations and other hall users are visited annually.

Education: Sunday School (Skool) and Youth Group: The Sunday "Skool" is autonomous and seeks to support the spiritual growth for the various age-groups who are there. With numbers currently being small, it is run by a dedicated team of three leaders. The children meet in church to share in a time of morning worship there before going into their own group for lessons, games and activities. Once a month there is an early evening club for families with young people and teenagers, though all are welcome. There is no formal education committee, but there is an adult bible study group which meets fortnightly one morning, and there is a Saturday morning prayer group.

Mission: The committee's areas of service include running a weekly creche for young children and their carers. Each year three craft/games events are arranged for children to coincide with Christmas, Mother's Day and Father's Day. These events are free and open to everyone in the community, invitations being issued using a variety of methods and media. A link with the local primary school is fostered through running a Christmas story activity event with the Pr.6 classes and their teachers. The school also makes use of the church for the end of term services. The committee are visible and active at local community events such as "Lighting Up Day" before Christmas, "Easter Connections" in conjunction with the local Council of Churches and Prestwick Prom Day. These are open to

everyone in the community and allow Christian outreach across all ages. The Committees' strength lies in organising events that are fun and engage across community and we continue to seek innovative ways to extend our activities to those who have little or no connection with the church or the Christian message.

Health and Safety: This committee takes very seriously the responsibility on behalf of the St Nicholas Church Trustees to identify, assess, minimise, control and monitor the health & safety and safeguarding risks to all who attend and use our church buildings and to comply with all applicable UK and Scottish legislation. Risk Assessment is monitored across all organisations and as affects hall-keeper and cleaner; kitchen and food hygiene; fire and emergency procedures; portable appliance testing; first responder training; maintenance of defibrillator; safeguarding; accident Book. Our Safeguarding Co-ordinator also carefully maintains the necessary safeguarding checks and controls for our organisation. COVID19 provided a particular challenge, however through careful assessment and application of risk control measures we managed to offer safe worship to those who wished to attend church.

Communion duties, duty teams, and funeral duties are in the remit of the Session Clerk, as are duties for special services when appropriate.

Giving

The Congregation of St. Nicholas has always been liberal in giving, allowing us to meet all our commitments in full and to be supportive of less fortunate churches. In 2023 the total income was £150,246 of which over £139,000 was unrestricted. Total expenses for the year were £164,868, which includes £54,333 Giving to Grow Allocation, locum fees of £8,189 and salary costs of £17,069 for three employees, namely the organist, hall-keeper and cleaner. In addition, a new boiler was installed at a cost of £42,021, of which £9,953 was raised through a Boiler Appeal. In 2024, the Giving to Grow Allocation equivalent will be just over £54,000.



The Kirk Session Fund is a restricted fund which has been underutilised in previous years. In 2022, given the ongoing economic situation, it was agreed that the interest arising be donated to the South Ayrshire Foodbank, a sum of £1,258 in 2023. In addition, further giving by the Congregation resulted in £708 being donated to Tearfund, £1,219 to Whiteleys Retreat, £471 to Christian Aid and £367 to Poppy Scotland.

Separately, there is a Malawi account and a Ukraine Family fund where money is accrued from donations or from specific fundraising endeavour. The Malawi account allowed £3,135 to be disbursed by way of direct contributions and shipping costs for donated items to be sent to our twin Church in Phiri in the Presbytery of Bandawe. The Ukraine Family Fund had a balance of £1,190 to help support an extended Ukrainian family who have made their home in the vacant Manse.

In addition, the Congregation continued to support Blythwood Care's annual Shoebox Appeal with donations of boxes filled with specific items for distribution in Eastern Europe.

Our accounts include figures for the Church organisations who are responsible for their own monies. At 31 December 2023 the balance of these funds was £4,261.

As the Church is a registered charity details of our Annual Return to OSCR, the Scottish Charity Regulator, which contains our full annual accounts, can be found by visiting [OSCR | Charity Details](#)

The Community

Support of the community of Prestwick is very important to the Kirk Session and members of St Nicholas. The church buildings provide a town centre venue for one of the local children's nurseries on one morning each week and hosts their annual awards ceremony.

Our Locum Minister has re-established Christian communication with one of the local primary schools. 'Fun Times' activity sessions for 3–11-year-olds are held on certain Saturdays throughout the year encouraging local non-church families to take part in arts & crafts, games and socialising.

The Church very much enjoys being the venue for the Rotary Club Christmas Concert, Ayrshire Fiddle Orchestra Concert (opening Prestwick's 'Lighting up Day' celebrations), along with organ recitals and other similar community events.

The annual Prestwick Prom Day also provides an opportunity for St Nicholas to take part in the community, hosting a stall.

We are blessed to be able to provide a sanctuary to a local charity, Ayrshire Baby Loss Support, allowing bereaved parents to attend an annual service of reflection, sharing and support.

Our parishioners also continue to actively support the South Ayrshire Foodbank with weekly donations.

During the 2023 economic crisis, we hosted a 'cosy place' for those needing a warm place to come and have a chat, sit in comfort, read the papers and have a cuppa.

Our active Mission Committee continue to run events encouraging community involvement including a town walk and barbeque. Parish visitations have also been held over the years, with volunteers physically visiting a third of the parish each year, bringing the best wishes and prayers of St Nicholas.

Having an empty manse during the Russian invasion of Ukraine, meant we were in a position to offer a safe home for a Ukrainian family. Our Kirk Session unanimously agreed to fund and offer our manse as a home in 2022 and we were very pleased to welcome a three generation Ukrainian family, taking up residence, where they have felt extremely welcome and safe.

The congregation supports a wide variety of organisations that utilise our church halls providing an ideal space for these community organisations to meet. Our Guild has recently amalgamated with Kingcase Parish Church Guild to form a new Kingcase St Nicholas Guild and weekly meetings will now take place alternating between church halls.

An opportunity for an hour's adult Bible study is provided at 'Up Close and Personal' on the first and third Monday morning of each month from October to Spring as well weekly 'Jolly Tots' fun for children ages 0-3, hosted by parents and grandparents. Associated uniformed organisations include 1st Prestwick Guides and Brownies, 2nd Prestwick Rainbows and Brownies and 14th Ayrshire Scouts, Beavers and Cubs.

Strengths / Weaknesses / Challenges

Strengths

1. A loyal, supportive congregation have returned to a steady, maintained level of attendance at worship after the pandemic and to engaging with the services provided online.
2. There is a healthy level of giving supported by good governance of finances.
3. Hard working office-bearers.
4. An accomplished organist and choir committed to offering an introit and an anthem each week.
5. After the difficulties of the pandemic, the Church Guild has returned to regular weekly meeting from October until March and has now joined with Kingcase Church Guild to become Kingcase St Nicholas Guild.
6. Enthusiastic support for Mission.
7. Wealth of talent within the Congregation.
8. The halls are well-used by youth organisations and by secular groups.
9. The location within the community and the large expanse of ground bordering the Main Street allows outdoor events to be on public view.
10. The fabric of the buildings is well-maintained, with the recent addition of the new heating system a considerable benefit.
11. A small but enthusiastic, ably led Sunday School.

Weaknesses

1. Rather too comfortable with "tradition".
2. The demographics of the Congregation - a missing generation.
3. A need to engage more with social media.
4. Reluctance/shyness about volunteering - though direct appeals gain a response.

Challenges

1. To think "outside the box" in trying to find ways to encourage and keep young families.
2. To find ways of supporting young/middle-aged parents (and others) who are trying to balance working and family life while engaging also in church life.
3. To be supportive of an elderly congregation.
4. To promote Christian education among young people of Sunday School and Youth Group age - is Sunday the best/only day?

The Future

Since its dedication in November 1908, only four ministers have been called to the pulpit of St Nicholas. Through retirement, we now seek a fifth.

The 2023 presbytery plan approved a reduction in the number of churches in Prestwick from four to two and a deferred union of Kingcase Parish Church with St Nicholas Parish Church, but only on demission / retirement / translation of the Parish Minister with tenure at Kingcase Church. In the interim we have been given leave to call a Minister on an unrestricted tenure, who will take over the ministry for the joint parish when the union occurs.

We seek a forward thinking, energetic and enthusiastic Minister to lead us and help expand God's Kingdom in the community of Prestwick.

We recognise it is difficult to attract young families to worship, with the many activities and sports on offer and therefore we have commenced a review and upgrade of our website, social media use, worship and music, with a view to appeal to more, younger families whilst striking a balance with our faithful parishioners.

A Minister who supports innovation in worship, outreach and parishioner support will be essential along with the provision of training and encouragement to our elders and committees and will need to be adaptable to lead us through these changing times.

APPENDICES

Appendix 1 - Malawi Church Profile Information 2023



Malawi Partnership

St Nicholas Parish Church has been twinned with Phiri Church in rural Northern Malawi since 2009.

Our Malawi Committee was set up to build a positive partnership with Phiri, understand each other's culture, and share our resources and knowledge in appropriate ways.

Over the years several members of our committee have visited our twinned church, which consists of the main church at Phiri and ten rural prayer houses, to help sustain and strengthen the partnership and manage the projects we support.

St Nicholas Church families have also hosted members of Phiri Congregation here in Prestwick.

Malawi is a beautiful country, and we have made many friends there, but it suffers from being land-locked and from extremes of weather.

Regular prayer for identified needs is carried out, and as a congregation, some of the projects we have helped with are:

Funds to re-build the main church, two prayer houses and roofing materials for others; provided thousands of mosquito nets to help in their fight against malaria; raised funds for solar lamps as most of the houses don't have electricity; provided toys, learning materials, cooking pots and cups for the nursery school; funds for food and harvest seeds in times of famine; donated sewing machines, bicycles, carpentry and gardening tools and; sent a regular supply of everyday goods such as clothing and footwear, soap, towels, baby hats and blankets, toiletries, sewing kits, buttons, books, paracetamols, stationery, footballs and pumps, and many other things we take very much for granted here. These everyday items are very greatly appreciated, and we keep our knowledge of the food

situation current so that we know if food and seeds have a higher priority than other material projects at any given time.

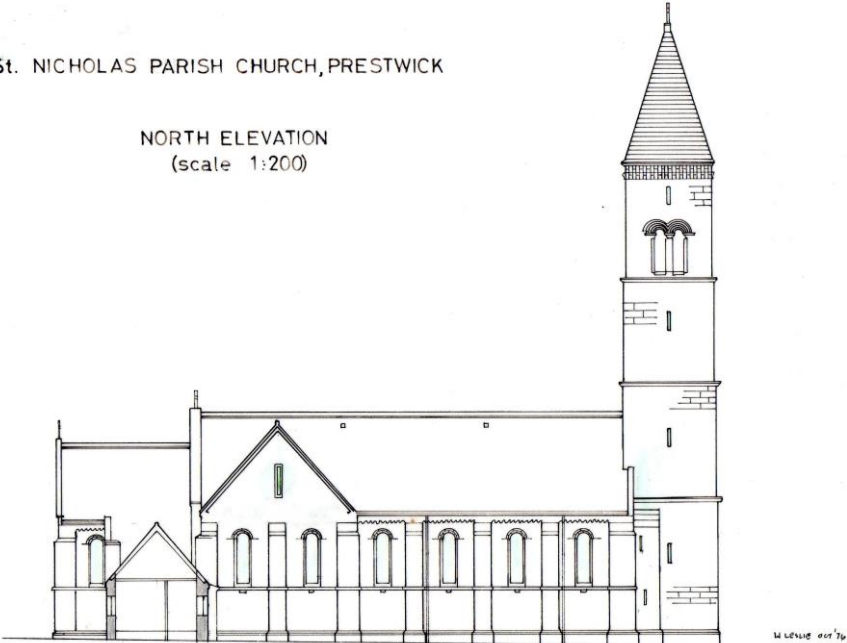
Currently we are helping to fund the building of a Health Clinic at Sanje, one of the remote prayer houses along the lakeshore.

As a congregation we actively raise funds and donate goods for our partner church at Phiri and we are very grateful for all the help and support that is given to our committee. The people at Phiri are in turn overjoyed with the help and support they consequently receive.

Appendix 2 - Drawings of the Church elevations.

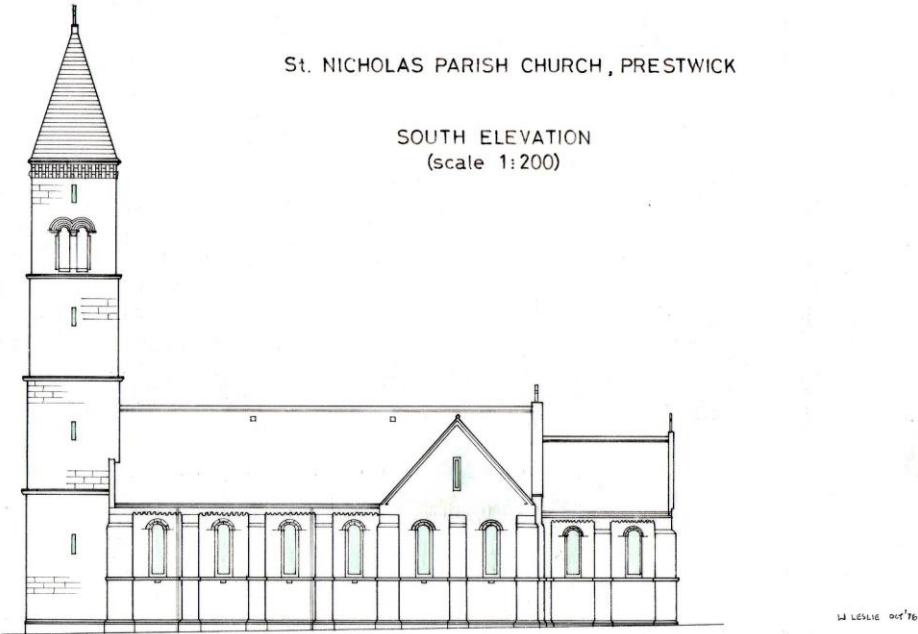
St. NICHOLAS PARISH CHURCH, PRESTWICK

NORTH ELEVATION
(scale 1:200)



St. NICHOLAS PARISH CHURCH, PRESTWICK

SOUTH ELEVATION
(scale 1:200)



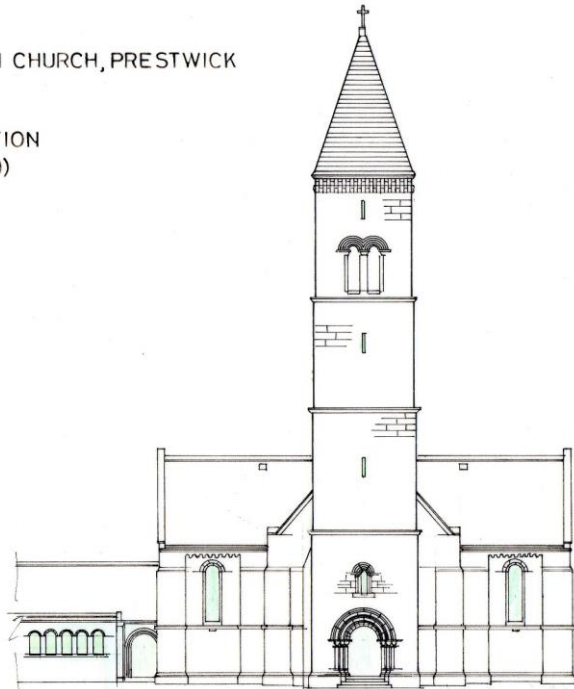
St. NICHOLAS PARISH CHURCH, PRESTWICK

EAST ELEVATION
(scale 1:200)



St. NICHOLAS PARISH CHURCH, PRESTWICK

WEST ELEVATION
(scale 1:200)



W. WOLFE ARCHT.

KINGCASE PARISH CHURCH PROFILE

Introduction

The vacancy of St Nicholas Parish Church Prestwick in Deferred Union with Kingcase Parish Church Prestwick arose because of the former legacy Presbytery of Ayr Mission Plan agreed in terms of the General Assembly Mission Plan Act (Act VIII 2021). Item 7 of the Basis of Deferred union states "Minister: The congregations to be united shall proceed to the appointment of a minister who shall be inducted in the first instance as minister of St Nicholas Parish Church of Scotland, provided that on the demission/retirement/translation of the Rev Ian Wiseman, minister of Kingcase Parish Church of Scotland, the union shall immediately be effective under the minister so appointed and inducted."



History of the charge and/or congregations

Kirk Session Statement

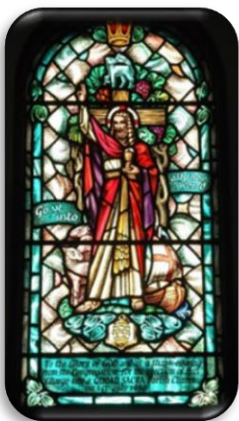
The Kirk Session has decided to depart from the historic and current practice of the Church of Scotland in order to permit the ordination, induction or appointment of a minister who is in a civil partnership or a same sex marriage.

Roots and History

Prestwick: Kingcase Parish Church was formally recognised by the Presbytery of Ayr as a Church Extension Charge in 1934. The first Minister the Rev'd Peter Ferguson was inducted on Wednesday 28th November 1934. The Kirk Session was made up of Assessor Elders appointed by the Presbytery.

However, the roots of the newly recognised congregation went further back. Like St Nicholas Parish Church, Kingcase was a mission initiative of St Cuthbert's the longstanding parish church for Monkton and Prestwick, which sat between the two settlements.

A former school building at Kingcase was gifted to the Kirk Session of St Cuthbert's and it was used as a Mission Hall for many years. Having established the work at both Kingcase and St Nicholas, St Cuthbert's Kirk Session passed the responsibility for the Mission Hall to the Kirk Session of the newly built St Nicholas Church. In 1911 an application was made to the Church of Scotland Home Board for a grant to erect a new Mission Hall. This was approved and on the 15th of June 1912 the foundation stone was laid with the motto from Psalm 127 'Except the Lord build the house, they labour in vain that build it.'



Such labour was not in vain as twenty-two years later the mission hall congregation of 164 people became a Church extension charge with its own Minister. Sixteen years later on the 1st of July 1950 continued development over the years saw the congregation granted the status of a Church and Parish Quoad Sacra.

On 2nd July 1956, the dedication of the new transepts and chancel added to the 1912 building took place. Further growth beyond that saw the membership increase to become one of the biggest congregations in the West of Scotland.

Mission Plan

A comprehensive joint Mission Plan constructed by both congregations based on the Five Marks of Mission was approved and accepted by the Presbytery of Ayr in 2022. It should be read in conjunction with the Vacancy Profile.

Mission Context

Kingcase Church parish is set in a popular, even thriving urban location on the coast of Ayrshire. However, it is the case that the locale adjacent to the Kingcase church building has been identified by the Scottish Index of Multiple Deprivation (SIMD) as deprived. Links relevant to the mission context and deprivation are below.

<https://cos.churchofscotland.org.uk/church-finder/data/statistics/parish-profiles/100587.pdf>

https://cos.churchofscotland.org.uk/church-finder/data/statistics/deprivation/Dep_100587.html

Strengths/needs/challenges

One of the Kingcase congregation's ongoing strengths is the quality of friendship and fellowship it offers, however like many other congregations this is generally between current members. It has been difficult to meet the challenge for greater community engagement beyond those who are members or friends of the congregation. At the same time there is perhaps within society today a suspicion or wariness about anything that churches seek to do in terms of outreach and support for the local community.

The Covid Pandemic saw the needs and challenges increase exponentially. A modest but thriving Sunday School was affected, as was regular church attendance. The age profile of the Kirk Session has meant that reducing numbers impact upon the number of people available to undertake the tasks essential to church life and congregational administration.

Spiritual life of the congregation

Worship is especially important, indeed central to the spiritual life of many in the congregation. However, it is also clear that there is a healthy desire among some to engage in ways other than the traditional hymn/prayer/sermon sandwich. There is a recognition by several members of the need for equipping as disciples rather than just church members.

Outreach

Outreach activities have also been reduced significantly in recent years. A Dementia Friendly Church Project got off to an excellent start with many Elders and Office Bearers receiving formal training from NHS personnel, but development beyond that was hampered by the pandemic. Other corporate activities have ceased because of a lack of people to run and support them.

The Fellowship and Hospitality Team run various much appreciated annual events that are well supported by the congregation with some attendance from other

churches and the local community. At the same time, many individual members of the congregation participate in supportive community activities, such as working in charity shops, running the Biggart Hospital Cafe, supporting Ayr Men's Shed and so on. The availability of the hall premises to all kinds of charities, youth groups and activities is also seen to be an outreach to the community.



Communion Roll

The Communion Roll in December 2023 stood at 451 members. However, an ongoing membership review exercise has been taking place since 2018 and communication with absent members is underway.

Weekly attendance at worship

Attendance at worship varies between 70 to 115 people.

Age profile of congregation

The age profile of the congregation is predominantly elderly and very elderly.

Past five years new members

In the past five years there have been two new members by profession of faith, and three new members by Certificate of Transfer or Resolution of the Kirk Session.

Local Church Review

No Local Church Review activity has occurred for several years owing to Presbytery changes etc. Our current Minister is however a practitioner of Appreciative Inquiry and is always willing to support any activity for review or process of change.

Presbytery Plan beyond this current ministry

The present Presbytery Plan does not include a view as to what happens beyond this current ministry. However, Kingcase Kirk Session has consistently advocated over the past five years for the uniting together of all four Church of Scotland congregations in Prestwick. Concerned for the Christian good of Prestwick it held the view that the creation of one large congregation (St Nicholas and Kingcase) and one exceedingly small congregation (South and Monkton and Prestwick North) was not an imaginative or visionary decision within the spirit of the Mission Planning process.

Operating basis

Kingcase congregation operates on the basis of a unitary constitution. There are forty-nine Elders serving on the Kirk Session. All the Session are over 45 years of age and predominantly in the 64-85 and over category. Fifteen members of the Session are male and thirty-four are female.

The Kirk Session carries out its functions through the following nine teams which undertake the oversight of the groups and organisations named in their brief on behalf of the Kirk Session.

Pastoral Care Team - The Pastoral Care Team will identify ways of resourcing and developing our pastoral care strategy and will be responsible for all issues involving pastoral care, including the Circle of Care, distribution of the Sunday Flowers, Transport Rotas, Recording of Services, Roll Keeping, Prestwick Food Bank, the Healing Service, Dementia Friendly Church and development of Elder Districts.

Children and Families Team - The Children and Families Team will seek to resource the inclusion and nurture of children and families in congregational life, worship and education. They will support the activities of the Cradle Roll, the Crèche, Funday Sunday Club, and Youth Organisations. This will also include Safeguarding and the annual Holiday Club. They will also identify and report any pastoral care needs amongst children and families.

Communication Team - The Communication Team will identify, implement and develop a suitable continuing communication strategy for the church. They will support the management of the church website and Facebook page. They may seek to develop the potential of the church magazine as a communication tool. They will identify, advise and respond to requests in connection with appropriate publicity and advertising. They will also act as a listening post in the local community and report

useful information/developments that are relevant to the mission of the church. Oversee printed communications including Life and Work magazine.

Stewardship and Finance Team - The Stewardship and Finance Team will husband the financial resources of the church, including Freewill Offerings, Gift Aid, budgeting and planning as well as Legacy Promotion and specific fundraising and investments, and all other matters in connection therewith.

Property Team - The Property Team will care for the church property through regular inspection and a rolling programme of planned maintenance. It will ensure adherence to legislation connected to property including Church of Scotland regulations. It will deal with Health and Safety issues and undertake arrangements in connection with grounds and gardens maintenance. It will also oversee Hall Booking arrangements and in conjunction with the Finance Team set appropriate rates for hall users. It will also progress the Eco Congregation initiative.

Discipleship and Nurture Team - The Discipleship and Nurture Team will identify and organise appropriate Christian Education opportunities for promoting our growth in faith. They will promote the stewardship of time, talents and skills and will encourage individuals in service of the church. They will maintain, develop and promote the individual spirituality and prayer life of the congregation. They will support the Prayer Group, Bible Study Group. They will also support and resource new member programmes.

Worship Team - The Worship Team will support the Minister by planning and assisting in worship events including Christmas and Easter and special services etc. They will oversee the Bible Reading Rotas and encourage people to participate in them. They will coordinate and support the Reflections content of worship and identify and appoint participants. They will support the involvement of the Choir, Praise Group and Kingcase Players in worship. They will also reflect on worship experiences and identify potential developments that will enable worship to be more inclusive and welcoming of the community we serve.

Fellowship and Hospitality Team - The Fellowship and Hospitality Team will identify and develop fellowship opportunities for the congregation and community. They may plan and organise occasional or ongoing events including social fundraising and the church holiday. They will oversee catering arrangements and will support existing groups.

World Church/Ecumenical Relations Team - The World Church/Ecumenical Relations Team will oversee the external relationships which reflect our membership of the Church catholic and universal. This will include Prestwick Council of Churches, Christian Aid, Traidcraft, the Malawi Covenant, and any other World Church relationships which may develop.

Team membership review - Membership of teams was to be reviewed every three years, with no member serving for more than two terms of three years during any one period. Membership is also open to members of the congregation or anyone in the community with relevant experience and skills.

Most recent ordinations and admission to Kirk Session

The most recent ordinations and admission to the Kirk Session occurred on 20th August 2017 when seven Elders were ordained and admitted.

Community Profile

Parish Area

Kingcase parish straddles the southern end of the town of Prestwick and the northern end of the town of Ayr, drawing its congregation from the residential parts of these areas and well beyond them.

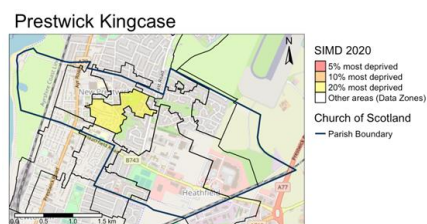


Schools

Within Kingcase parish there are two large primary schools – Kingcase Primary School and Heathfield Primary School. Both had a longstanding Chaplaincy connection with the church and most recently our present Minister was regularly involved in leading assemblies, and in classroom activities in both schools. Classes from both schools were frequently welcomed on visits to Kingcase Church building as part of their learning curriculum. For many decades Kingcase School regularly held its Christmas and Easter services in the church until the school roll became significantly larger and the school decided that the church could no longer accommodate the numbers involved. The school thereafter moved its services to St Nicholas Church.

Socio-economic profile

The Socio-economic profile of the parish may be viewed via the Statistics for Mission Link – (highlighted within mission context page19).



Workplace Chaplaincy

There may be some scope for workplace chaplaincy in the parish through the hotel and stores on Ayr Road, and the car showrooms and retail park in the Heathfield area.

Worship Life

Pattern of Worship

Public worship occurs weekly on a Sunday at 10.30am. A fortnightly midweek service on a Wednesday ended because of the pandemic but has been replaced by an online midweek service led by members of the congregation who enable the singing of hymns and provide appropriate readings and reflection materials. Many have expressed their thanks for this service, and it has participants from other churches and countries.

Worship Style

The Sunday worship style is relatively traditional but not heavily formal and tends to use the readings from the Revised Common Lectionary except when specific occasions require an alternative approach. However, in 2023-2024 the readings are being taken from the Spill the Beans material.

Worship Priorities

For Kingcase congregation it is worship itself which is a priority. It recognizes that everything in the life of the church flows from that regular sacred act of praise and prayer. The seasons of the Christian Year are also an important priority.

Holy Communion

There have traditionally been five Communion services held over a year in February, March, June, September, and December. However, these have been augmented by additional communions on the first Sunday in January, and an early communion service on Easter Day. Home Communion services are also conducted with the help of a retired Minister member of the congregation. Those involve over thirty elderly members of the congregation.

Children and Holy Communion

With the decline of our Sunday School there has been no involvement of children for the past five years.

Baptism

There have been eight baptisms in the past five years.

Special Services

A number of special services are held throughout the year including:



- Circle of Care Service
- Monthly Service of Prayer for Healing
- Annual Remembering Service for the Bereaved
- Annual Cradle Roll Service
- Services for people living with dementia, families, and carers
- Malawi Sunday
- Annual Thinking Day/Founders Day Service for Scouts and Guides
- Annual Boys' Brigade Company Service
- Remembrance Sunday Service with uniformed organisations

Preparation, planning and leading of worship

Most of the current preparation, planning and leading of worship is undertaken by the Minister. Our Worship Team is no longer functioning owing to other demands upon its members. Members of the congregation participate in all the services through Bible readings and the presentation of Reflections.

Order of Service

A printed order of service is provided for the congregation, which also contains the hymns. We have not reverted to using hymn books as members find the lighter weight of paper more convenient. CDs of services are distributed to the housebound and sick.

Projection

Data projection is used for special/seasonal services, or within other services when video material is being presented.

Musical Resources

Hymns are largely taken from the Church Hymnary Fourth Edition, as well as the Combined Mission Praise. Other hymn resources are also used if relevant to the worship.

Organ

A two manual Allen Digital Organ is used to accompany the praise, and a piano is also occasionally used. For emergencies we use the Hymnal Plus system provided by Hymn Technology Ltd.

Organist/Choir

Our regular organist is Mr Paul Cohen an experienced musician and very competent improviser. Sadly, we no longer have a church choir since the onset of the Covid pandemic.

All Age Worship

Prior to the Covid pandemic we had frequent All Age/Intergenerational worship especially around celebratory occasions and specific times in the seasons of the Christian Year as well as on the occasion of Baptismal services. Now they mainly occur around Easter and Christmas as well as at Baptisms.



The Definition of All Age Worship

The congregation would define all age/intergenerational worship as being about:

- building relationships - offering a key time for people to get to know each other better and build a sense of connection;
- a time of worship and learning that is offered in a simplified and participatory way - simple does not mean shallow; rather it enables everyone to contribute and receive in a meaningful and appropriate way;
- providing an inclusive experience and a sense of belonging - helping everyone of all abilities to feel part of the body of Christ, whatever their experience;
- being a bridge - not only between ages but also for those who are exploring what being part of a church means. This relaxed service style can provide a comfortable place for some to discover more about Christianity;
- encouragement, nurture and inclusiveness - it is a means by which faith can grow and, in turn, inform life-making or life-changing decisions;
- exploring vocation - an opportunity to discover and develop gifts and calling.

Pastoral Care

Operation of Pastoral Care

The pastoral care of the congregation is undertaken by the Minister and Elders, and through the Circle of Care group which maintains contact with housebound members and those in residential care. A retired Minister in the congregation supports this activity through conducting home communion visits. The Minister is advised of pastoral needs through communications from Elders, members, or the Church Office Administrator. However, as in many churches it is often assumed that the Minister knows about a situation when in fact that is not the case. Elders and members are also involved through functioning as Circle of Care Visitors. There is also a great deal of informal pastoral care between members.

The Kirk Session has operated the traditional model of Elder Districts, but it has been clear for several years that is no longer functioning in the way it was first intended. There are several reasons for this. 1. Retirements, long term illness and deaths of Elders and no available replacements – this is an ongoing issue. 2. The assumption that every Elder is gifted in relation to pastoral visiting rather than identifying Elders gifts and strengths and appointing them to tasks appropriate to those. 3. Changing times indicate that many members of the congregation are not comfortable with a level of contact which involves Elders visiting them at home. As a result, many Elders are seen simply as personnel who deliver the church magazine.

An attempt to address this situation was made some years ago with the suggestion that Elder Districts be redeveloped to meet present day needs.

Funerals

Below is an indication of the number of funerals over the past five years. The vast majority have been Crematorium services, with only a small number being held in the sanctuary, followed by burial or cremation. In one or two cases the burial or cremation preceded the funeral service.



A noticeable phenomenon identified since the pandemic has been the situation where longstanding members of the congregation have died, and the family has not contacted the church or involved it in a funeral. These funerals often being conducted by a Celebrant.

- 2019 - 16
- 2020 - 40
- 2021 - 20
- 2022 - 18
- 2023 - 17

Residential Homes

Kingcase Church has elderly members in many of the Care Homes/Nursing Homes in the Troon, Prestwick, Ayr area, and some as far away as Patna. There has not been any formal regular involvement of the Minister in any residential homes.

Christian Education

Children and young people - Christian education

Our Children and Families Team undertook the responsibility for our weekly Funday Sunday Club until the post covid absence of children required a rethink. Material for Christian Education was drawn from several sources including Roots, Scripture Union, and Spill the Beans. The focus at present is on arranging events three or four times per year to which the families of children on the Cradle Roll are invited. This has had mixed success and parents have often been indifferent. An annual weeklong holiday club in the period before schools return after the summer break has been re-established post pandemic and has had good attendances. However, that attendance has not resulted in the uptake of weekly activities thereafter.

The 2024 Holiday Club was run in partnership with St Nicholas Parish Church.



Youth Organisations

The congregation supports the 1st Prestwick Company of the Boys Brigade which has a company section, junior section and anchor boys' section. The company was only recently formed through the uniting of the 2nd/4th Prestwick Company (Kingcase Church and Prestwick South Church) and the 1st Prestwick Company (Monkton and Prestwick North Church). The single united company is supported by all the congregations in which its origins lie.

The congregation also supports other youth organisations meeting in its premises including 4th Prestwick Rainbows and Brownies, 12th Ayrshire (Kingcase) Cubs, 12th Ayrshire (Kingcase) Beavers, Scouts and Phoenix Explorers.

Adult Christian Education

Adult Christian Education has been the remit of our Discipleship and Nurture Team; however, they have struggled to gain support for that activity or to identify suitable programmes or materials appropriate to the congregation. A member led Bible Study group meets regularly over the winter months and was greatly helped by a local Church of Scotland Reader who has since died.

Ecumenical Context

Local clergy grouping

There are no local clergy groupings either of Church of Scotland clergy or those of other denominations.

Other denominations

Just beyond the southern boundary of Kingcase parish area there is New Prestwick Baptist Church, and a Christian Brethren Assembly. Just inside the northern boundary is St Ninian's Scottish Episcopal Church.

Joint services

Kingcase Parish Church holds joint Services of Prayer for Healing with St Ninian's Scottish Episcopal Church. These occur monthly on a Sunday afternoon at 4pm and the churches host them in their respective buildings in rotation.

Joint Services are also shared with the other churches in Prestwick during Holy Week. Each church taking an annual turn to host the services.

Churches Together

Ecumenism in the Prestwick churches has never developed into the more recent 'Churches Together' model and it retains the formal ecumenical format of a previous generation in Prestwick Council of Churches. Constituent members of that organisation include the four current Church of Scotland congregations, St Ninian's Scottish Episcopal Church, St Quivox Roman Catholic Church, and New Life Church – a congregation of the Assemblies of God.

Prestwick Council of Churches activities involve Easter events, including Holy Week Services and in recent years a celebratory event on Easter Saturday. The organisation also takes responsibility for conducting and consulting with the Community Council and ex service organisations in relation to the annual Remembrance Day service held at the War Memorial at Prestwick Cross and a connected service at the Polish War Memorial in the grounds of the Royal Air Force Association Club.

In recent years, the Council of Churches has sought to collate and publicise information about local church events in the Christmas season. Perhaps because it has not been influenced by the Churches Together Movement, Prestwick Council of Churches does not arrange events or promote the annual Week of Prayer for Christian Unity.

World Church

Church of Scotland Mission Partners

Kingcase congregation supports Church of Scotland Mission Partners through Presbytery.

Covenant Partnership Chintheche

Kingcase congregation participates in a meaningful and live covenant relationship with the Church of Central Africa Presbyterian congregation in Chintheche, Malawi. This relationship has now existed for a long number of years and the covenant is reviewed annually by both congregations. A copy of the Covenant should be read in conjunction with this document. Significant support has been generated for Chintheche, and that has resulted in the building of a school and the recent installation of a Maize Mill as well as ongoing support to a local hospital and groups associated with the church. Mutual visits have taken place on two occasions. A dedicated group in the congregation work hard to sustain this relationship.



Christian Aid

Kingcase members participate in a local Christian Aid committee which oversees an annual collection and a few events and services in support of Christian Aid. Kingcase Church also holds

an annual Christian Aid service usually based around video/audio materials provided by Christian Aid. The congregation also save up in 'Penny Jars' over the course of a year and these are gathered and donated on the first Sunday in Christian Aid Week.

Fair Trade

Support for Fair Trade is currently modest. A previous arrangement whereby Fair-Trade products were made available for sale post service came to an end, largely because of increasing expense. The congregation however remains committed to the use of Fair-Trade products at events in the church.

World Church

The congregation is always keen to keep itself informed about the world church and to engage with Christians across the world. In recent years it has supported a before and after school project in one of the most dangerous favelas in Fortaleza, Brazil.

It has also supported the world church through the Scottish Bible Society, the Open Doors organisation, and the projects of the Church of Scotland Guild.

Stewardship and Finance

Surplus/Deficit 2022 and 2023

The congregation's income during the period of the Covid pandemic was severely reduced and legacy funds identified for the provision of chairs/pew replacement and the reordering of the east transept into a more functional meeting space had to be used instead to fund day to day expenses.

Congregational income in 2022 was £96,527.00 and the deficit for that period was £17,447.00. During 2023 income rose to £107,806 and the period closed with a surplus of £11,279.00.

Giving to Grow contribution

The Giving to Grow annual contribution is currently set at £51,391.00.

National Stewardship Campaign

The congregation is not currently participating in the National Stewardship Campaign. Stewardship is currently explored and developed through the leading of our Stewardship and Finance Team.

Eco-congregation programme

Kingcase congregation participates in the Eco-congregation programme albeit with modest achievements.

Staffing

MDS Staff member

There is no current MDS staff member, and the Presbytery Planning process appears to have omitted the multiple deprivation presence within Kingcase Parish.

Administrative Support

The congregation employs an Administrator on two mornings per week whose duties revolve around the printing of an order of service, administering hall bookings and receiving payments, the printing of the church magazine, communicating pastoral needs to the Minister, supporting the Session Clerk and Minister in printing documents and correspondence.

Church Officer

Church Officer duties on a Sunday are conducted by teams of Elders. The congregation also employs a part-time cleaner who looks after the hall premises and ancillary rooms. A commercial cleaning company engaged at a modest rate attend to the cleaning in the sanctuary.

Church, Manse and Halls

Kingcase Church Premises Survey

A copy of the most recent survey will be made available to those who are called for interview.

Manse

As determined by the Basis of Deferred Union, the Manse will be that of St Nicholas Parish Church.

Property Major issues

There are currently no major property issues. The church buildings have been regularly maintained to a good standard and in recent years major works have involved replacing the sanctuary lighting, installing safety lighting and associated signage, installing double glazed windows in the church hall, redecoration of the sanctuary.

Church Hall usage

Kingcase Church Hall premises are in regular use by church organisations but are also in demand by the local community. Around fourteen external organisations use the premises on a weekly basis, with another half dozen or so using them less frequently. Hall lets are managed by the Office Administrator.

Web Links

<https://www.kingcase.co.uk>

<https://www.facebook.com/p/Kingcase-Parish-Church-Prestwick-100064795383787/>

Appendix 3 - [OSCR | Charity Details](#) - Kingcase Congregational Accounts

Appendices can be accessed as separate attachments on request.